

GMM2E 355 M 6c

IE2

GAMAK

3-Phase 400 V (Δ) 50 Hz

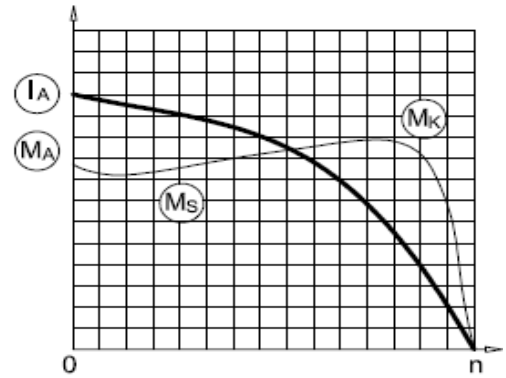
Duty Type : S1

Degree of protection : IP 55 (TEFC)

Insulation class : F (155 °C)

Temp rise : Class B (80K)

Mounting Design : B3



ELECTRICAL DESIGN

Direct On Line

Rated output (kW) : 250

Locked rotor Current – Ia (A) : 3059

Ia / In : 7.0

Speed (rpm) : 990

Locked rotor Torque – Ma (Nm) : 6030

Ma / Mn : 2.5

Rated current (A) : 437

Y / Δ Starting

Torque – Mn (Nm) : 2412

Locked rotor Current – Ia (A) : 1005

Ia / In : 2.3

Cos φ : 0.87

Locked rotor Torque – Ma (Nm) : 1930

Efficiency % :

4/4	3/4	1/2
95.1	95.1	93.5

Ma / Mn : 0.8

Moment of inertia J (kgm)² : 8.3

Breakdown Torque – Mk (Nm) : 5789

Mk / Mn : 2.4

MECHANICAL DESIGN

Frame : Cast Iron

End shields : Cast Iron

Cooling fan : Plastic

Terminal box : Aluminium

Cable gland : M79

No of cable glands : 2

Bearing Arrangement

Standard design

Drive End

6321 C3

Non Drive End

6321 C3

Reinforced design

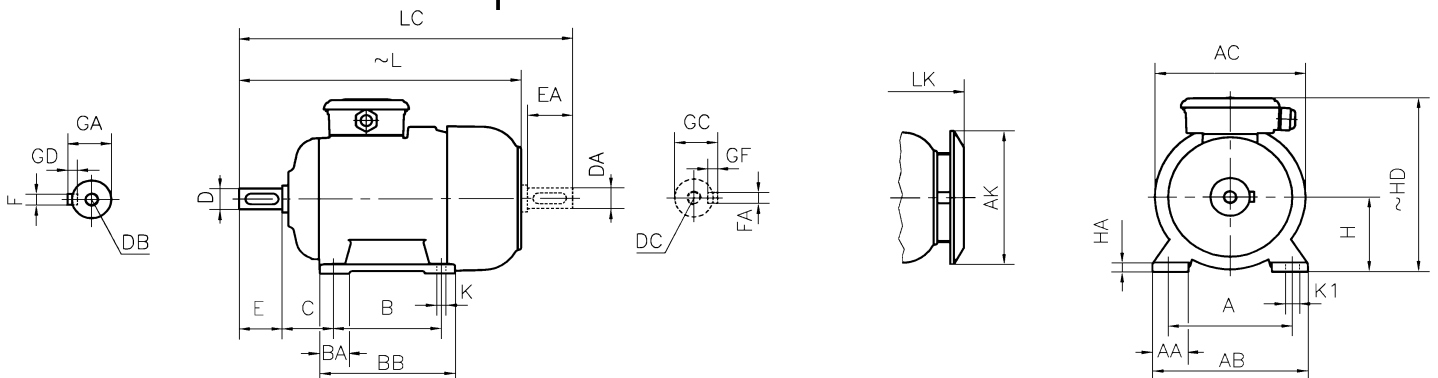
NU 321 E

6321 C3

Noise Level (dB-A) : 72

Paint : RAL 7031- Grey

Approximate weight (kg) : 1390



DIMENSIONS

Dimensions of foot mounted motors for mounting arrangement : B3, B6, B7, B8, B15, V5, V6

H	HD ~	HA	A	AA	AB	ØAC	ØAK	K	K1	B	B'	BA	BA'	BB	L ~	LC	LK ~	C	E EA	DB DC	ØD ØDA	GA GC	FxGD FAXGF
355	980	50	610	150	740	732	571	28	-	560	-	140	-	680	1377	1597	1454	254	210	M24	100	106	28X16

* Efficiencies are calculated according to indirect method where the additional load losses are determined from exact measurements at different load points.