

GM2E 225 M 6

IE2

GAMAK

3-Phase 400 V (Δ) 50 Hz

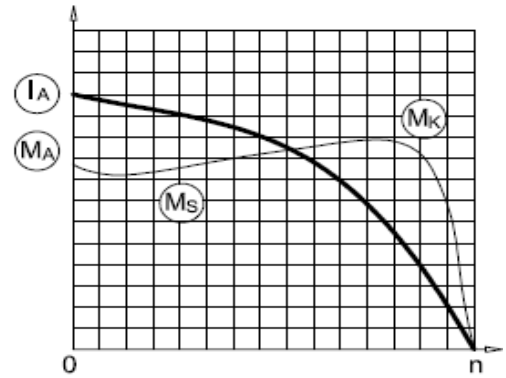
Duty Type : S1

Degree of protection : IP 55 (TEFC)

Insulation class : F (155 °C)

Temp rise : Class B (80K)

Mounting Design : B3



ELECTRICAL DESIGN

Direct On Line

Rated output (kW) : 30

Locked rotor Current – Ia (A) : 406

Ia / In : 7.0

Speed (rpm) : 980

Locked rotor Torque – Ma (Nm) : 876

Ma / Mn : 3.0

Rated current (A) : 58

Y / Δ Starting

Torque – Mn (Nm) : 292

Locked rotor Current – Ia (A) : 133

Ia / In : 2.3

Cos φ : 0.81

Locked rotor Torque – Ma (Nm) : 292

Efficiency % :

| | | |
|------|------|------|
| 4/4 | 3/4 | 1/2 |
| 91.7 | 91.7 | 89.6 |

Ma / Mn : 1.0

Moment of inertia J (kgm)² : 0.57

Breakdown Torque – Mk (Nm) : 759

Mk / Mn : 2.6

MECHANICAL DESIGN

Frame : Cast Iron

End shields : Cast Iron

Cooling fan : Plastic

Terminal box : Aluminium

Cable gland : Pg 36

No of cable glands : 2

Bearing Arrangement

Standard design

Drive End

6313 ZZ C3

Non Drive End

6213 ZZ C3

Reinforced design

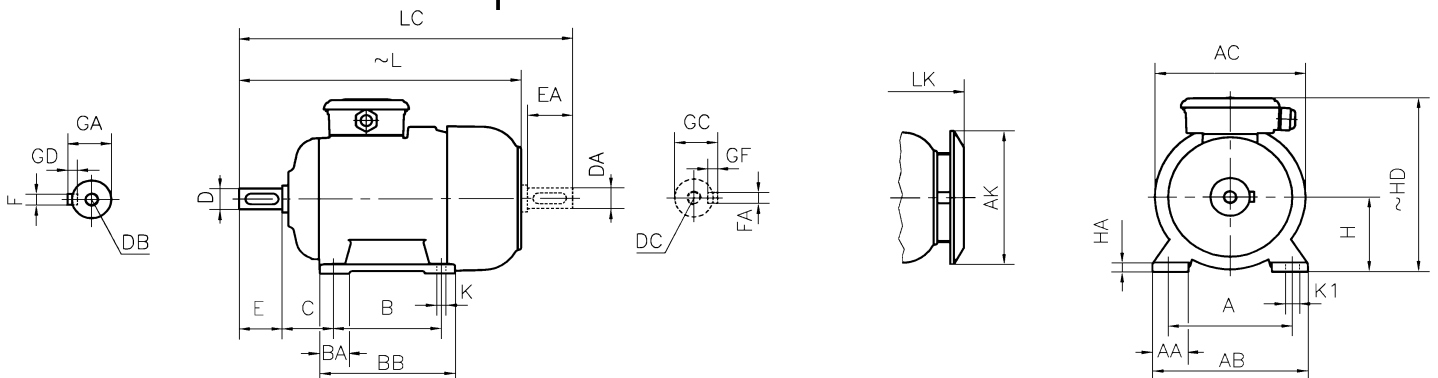
NU 313 E

6313 C3

Noise Level (dB-A) : 62

Paint : RAL 7031- Grey

Approximate weight (kg) : 285



DIMENSIONS

Dimensions of foot mounted motors for mounting arrangement : B3, B6, B7, B8, B15, V5, V6

| H | HD ~ | HA | A | AA | AB | ØAC | ØAK | K | K1 | B | B' | BA | BA' | BB | L ~ | LC | LK ~ | C | E EA | DB DC | ØD ØDA | GA GC | FxGD FAXGF |
|-----|---------|----|-----|----|-----|-----|-----|----|----|-----|----|----|-----|-----|--------|-----|---------|-----|---------|----------|-----------|----------|---------------|
| 225 | 510 | 30 | 356 | 82 | 438 | 434 | 370 | 19 | - | 311 | - | 76 | - | 371 | 820 | 968 | 876 | 149 | 140 | M20 | 60 | 64 | 18X11 |

* Efficiencies are calculated according to indirect method where the additional load losses are determined from exact measurements at different load points.