

GM2E 280 S 4

IE2

GAMAK

3-Phase 400 V (Δ) 50 Hz

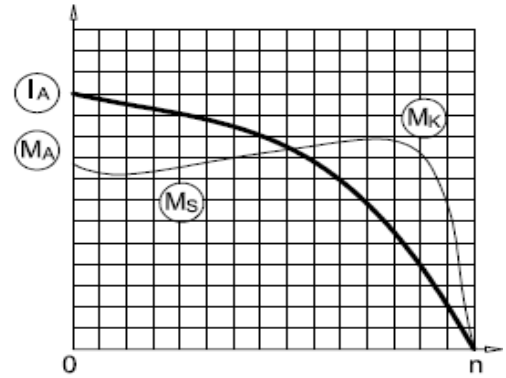
Duty Type : S1

Degree of protection : IP 55 (TEFC)

Insulation class : F (155 °C)

Temp rise : Class B (80K)

Mounting Design : B3



ELECTRICAL DESIGN

Direct On Line

Rated output (kW) : 75

Locked rotor Current – Ia (A) : 1051

Ia / In : 7.9

Speed (rpm) : 1480

Locked rotor Torque – Ma (Nm) : 1258

Ma / Mn : 2.6

Rated current (A) : 133

Y / Δ Starting

Torque – Mn (Nm) : 484

Locked rotor Current – Ia (A) : 333

Ia / In : 2.5

Cos φ : 0.87

Locked rotor Torque – Ma (Nm) : 387

	4/4	3/4	1/2
Efficiency %	94.0	94.1	93.4

Ma / Mn : 0.8

Moment of inertia J (kgm)² : 0.96

Breakdown Torque – Mk (Nm) : 1355

Mk / Mn : 2.8

MECHANICAL DESIGN

Frame : Cast Iron

End shields : Cast Iron

Cooling fan : Plastic

Terminal box : Aluminium

Cable gland : Pg 42

No of cable glands : 2

Bearing Arrangement

Standard design

Drive End

6316 ZZ C3

Non Drive End

6316 ZZ C3

Reinforced design

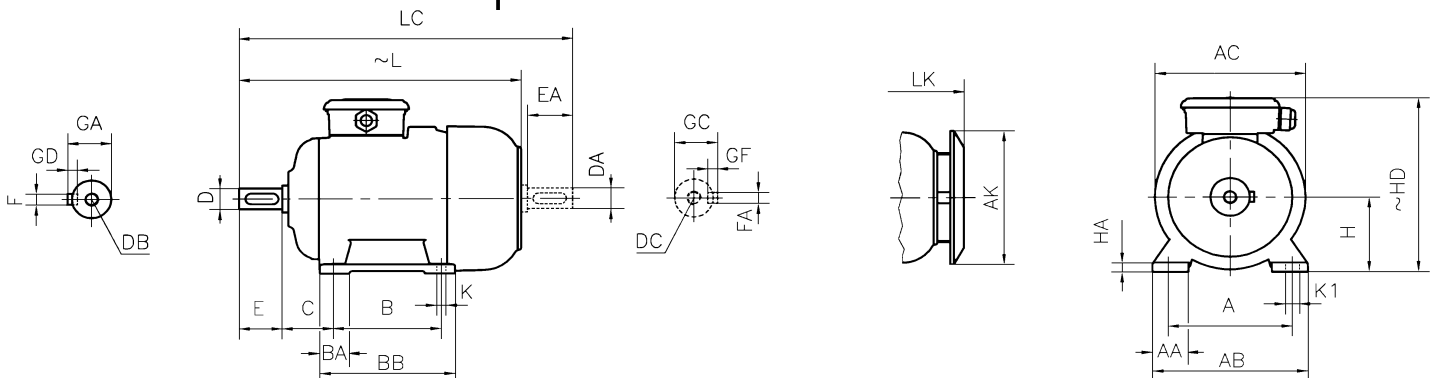
NU 316 E

6316 C3

Noise Level (dB-A) : 67

Paint : RAL 7031- Grey

Approximate weight (kg) : 550



DIMENSIONS

Dimensions of foot mounted motors for mounting arrangement : B3, B6, B7, B8, B15, V5, V6																							
H	HD ~	HA	A	AA	AB	ØAC	ØAK	K	K1	B	B'	BA	BA'	BB	L ~	LC	LK ~	C	E EA	DB DC	ØD ØDA	GA GC	FxGD FAXGF
280	630	40	457	120	550	544	440	24	-	368	-	85	128	474	958	1106	1014	190	140	M20	75	79.5	20X12

* Efficiencies are calculated according to indirect method where the additional load losses are determined from exact measurements at different load points.