

# GM2E 160 L 4

# IE2

# GAMAK

3-Phase 400 V (Δ) 50 Hz

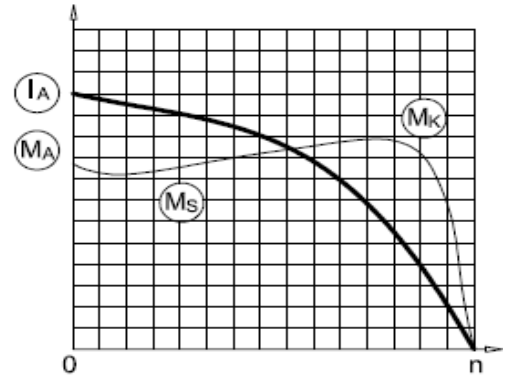
Duty Type : S1

Degree of protection : IP 55 ( TEFC )

Insulation class : F ( 155 °C )

Temp rise : Class B ( 80K )

Mounting Design : B3



## ELECTRICAL DESIGN

## Direct On Line

Rated output (kW) : 15

Locked rotor Current – Ia (A) : 224

Ia / In : 7.5

Speed (rpm) : 1465

Locked rotor Torque – Ma (Nm) : 254

Ma / Mn : 2.6

Rated current (A) : 29.8

## Y / Δ Starting

Torque – Mn (Nm) : 97.8

Locked rotor Current – Ia (A) : 72

Ia / In : 2.4

Cos φ : 0.82

Locked rotor Torque – Ma (Nm) : 78

	4/4	3/4	1/2
Efficiency %	90.6	90.7	89.7

Ma / Mn : 0.8

Moment of inertia J (kgm)<sup>2</sup> : 0.088

Breakdown Torque – Mk (Nm) : 342

Mk / Mn : 3.5

## MECHANICAL DESIGN

Frame : Cast Iron

End shields : Cast Iron

Cooling fan : Plastic

Terminal box : Plastic

Cable gland : Pg 29

No of cable glands : 2

## Bearing Arrangement

Standard design

Drive End

6309 ZZ C3

Non Drive End

6209 ZZ C3

Reinforced design

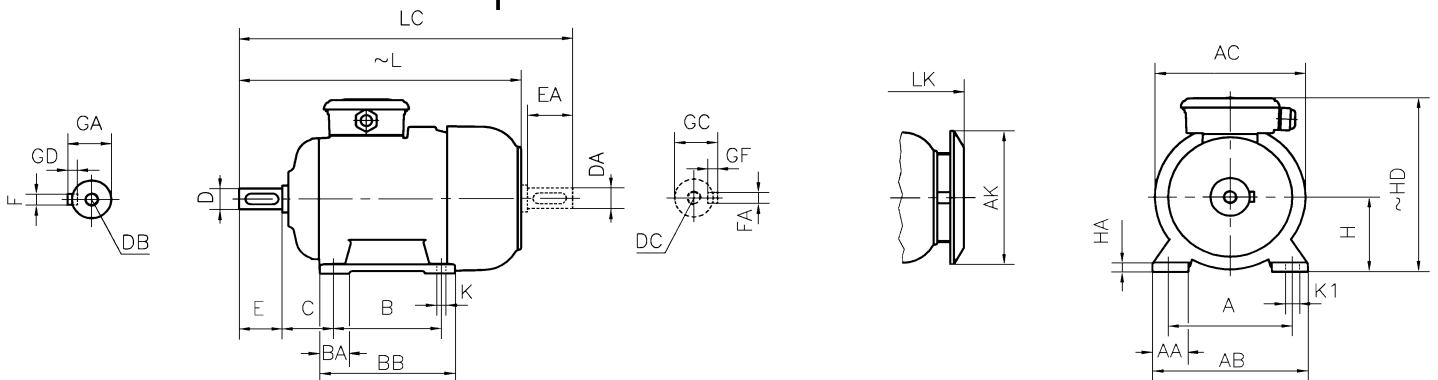
NU 309 E

6309 C3

Noise Level (dB-A) : 63

Paint : RAL 7031- Grey

Approximate weight (kg) : 135



## DIMENSIONS

### Dimensions of foot mounted motors for mounting arrangement : B3, B6, B7, B8, B15, V5, V6

H	HD ~	HA	A	AA	AB	ØAC	ØAK	K	K1	B	B'	BA	BA'	BB	L ~	LC	LK ~	C	E EA	DB DC	ØD ØDA	GA GC	FxGD FAXGF
160	380	22	254	60	312	310	303	15	-	254	-	62	-	304	644	760	701	108	110	M16	42	45	12X8

\* Efficiencies are calculated according to indirect method where the additional load losses are determined from exact measurements at different load points.