

# GM2E 132 M 4

# IE2

# GAMAK

3-Phase 400 V (Δ) 50 Hz

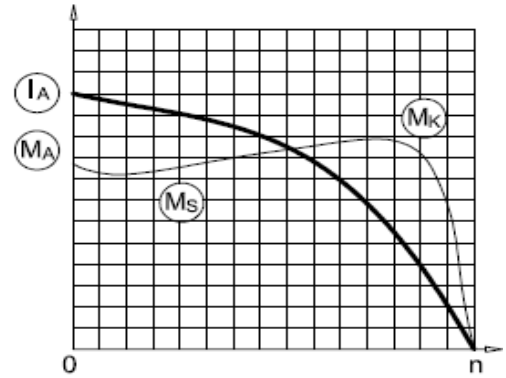
Duty Type : S1

Degree of protection : IP 55 ( TEFC )

Insulation class : F ( 155 °C )

Temp rise : Class B ( 80K )

Mounting Design : B3



## ELECTRICAL DESIGN

## Direct On Line

Rated output (kW) : 7.5

Locked rotor Current – Ia (A) : 109

Ia / In : 7.1

Speed (rpm) : 1465

Locked rotor Torque – Ma (Nm) : 132

Ma / Mn : 2.7

Rated current (A) : 15.4

## Y / Δ Starting

Torque – Mn (Nm) : 48.9

Locked rotor Current – Ia (A) : 35

Ia / In : 2.3

Cos φ : 0.79

Locked rotor Torque – Ma (Nm) : 44

	4/4	3/4	1/2
Efficiency %	89.0	89.1	88.1

Ma / Mn : 0.9

Moment of inertia J (kgm)<sup>2</sup> : 0.026

Breakdown Torque – Mk (Nm) : 166

Mk / Mn : 3.4

## MECHANICAL DESIGN

Frame : Cast Iron

End shields : Cast Iron

Cooling fan : Plastic

Terminal box : Plastic

Cable gland : Pg 21

No of cable glands : 2

## Bearing Arrangement

Standard design

Drive End

Non Drive End

6208 ZZ

6208 ZZ

Reinforced design

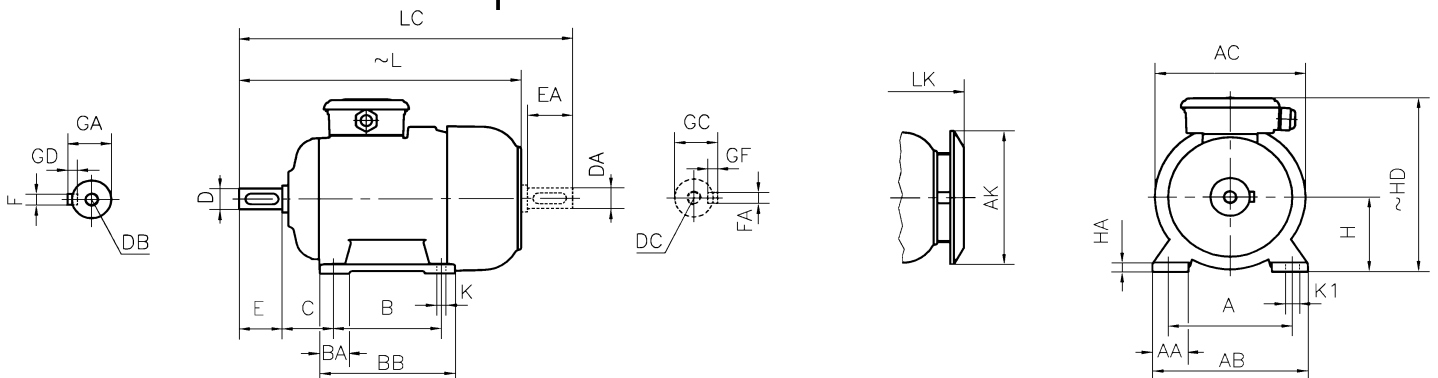
NU 208 E

6208 C3

Noise Level (dB-A) : 54

Paint : RAL 7031- Grey

Approximate weight (kg) : 61



## DIMENSIONS

### Dimensions of foot mounted motors for mounting arrangement : B3, B6, B7, B8, B15, V5, V6

H	HD	HA	A	AA	AB	ØAC	ØAK	K	K1	B	B'	BA	BA'	BB	L	LC	LK	C	E	DB	ØD	GA	FxGD
	~													~		~		EA	DC	ØDA	GC	FAXGF	
132	300	15	216	52	260	257	239	12	-	-	178	46	84	218	498	584	535	89	80	M12	38	41	10X8

\* Efficiencies are calculated according to indirect method where the additional load losses are determined from exact measurements at different load points.