

GMM2E 355 L 2a

IE2

GAMAK

3-Phase 400 V (Δ) 50 Hz

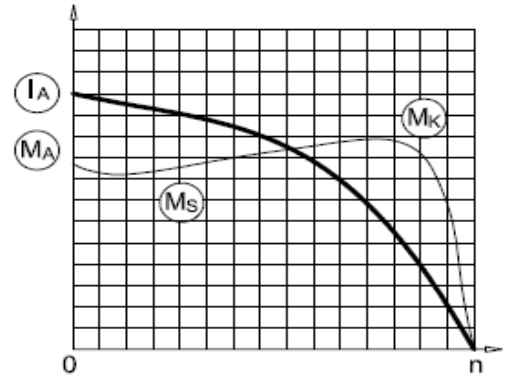
Duty Type : S1

Degree of protection : IP 55 (TEFC)

Insulation class : F (155 °C)

Temp rise : Class B (80K)

Mounting Design : B3



ELECTRICAL DESIGN

Direct On Line

Rated output (kW) : 400

Locked rotor Current – Ia (A) : 5280

Ia / In : 8.0

Speed (rpm) : 2980

Locked rotor Torque – Ma (Nm) : 2564

Ma / Mn : 2.0

Rated current (A) : 660

Y / Δ Starting

Torque – Mn (Nm) : 1282

Locked rotor Current – Ia (A) : 1716

Ia / In : 2.6

Cos φ : 0.92

Locked rotor Torque – Ma (Nm) : 769

	4/4	3/4	1/2
Efficiency %	95.4	95.4	93.9

Ma / Mn : 0.6

Moment of inertia J (kgm)² : 4.7

Breakdown Torque – Mk (Nm) : 2949

Mk / Mn : 2.3

MECHANICAL DESIGN

Frame : Cast Iron

End shields : Cast Iron

Cooling fan : Plastic

Terminal box : Aluminium

Cable gland : M79

No of cable glands : 2

Bearing Arrangement

Standard design

Drive End

Non Drive End

6318 C3

6318 C3

Reinforced design

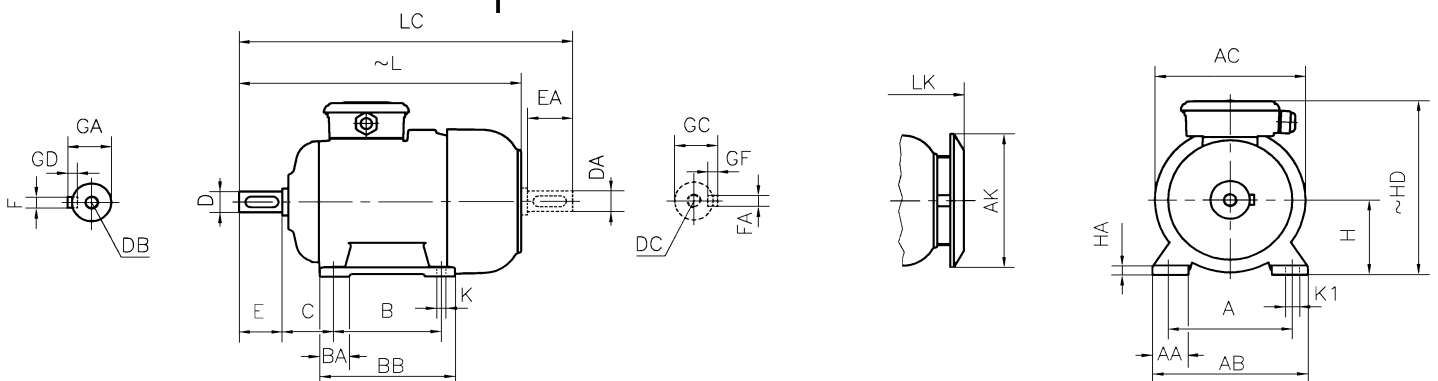
NU 318 E

6318 C3

Noise Level (dB-A) : 79

Paint : RAL 7031- Grey

Approximate weight (kg) : 1520



DIMENSIONS

Dimensions of foot mounted motors for mounting arrangement : B3, B6, B7, B8, B15, V5, V6

H	HD ~	HA	A	AA	AB	ØAC	ØAK	K	K1	B	B'	BA	BA'	BB	L ~	LC	LK ~	C	E EA	DB DC	ØD ØDA	GA GC	FxGD FAXGF
355	980	50	610	150	740	732	571	28	-	630	-	140	-	750	1467	1647	1544	254	170	M20	80	85	22X14

* Efficiencies are calculated according to indirect method where the additional load losses are determined from exact measurements at different load points.