

GM2E 280 M 2

IE2

GAMAK

3-Phase 400 V (Δ) 50 Hz

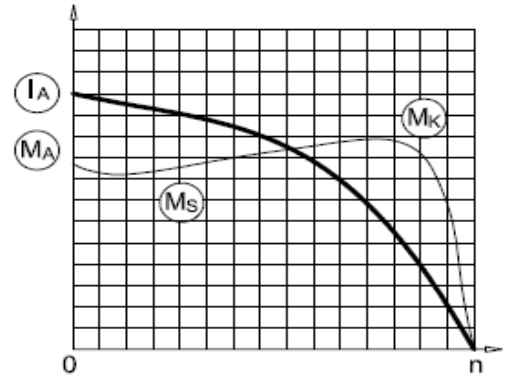
Duty Type : S1

Degree of protection : IP 55 (TEFC)

Insulation class : F (155 °C)

Temp rise : Class B (80K)

Mounting Design : B3



ELECTRICAL DESIGN

Direct On Line

Rated output (kW) : 90

Locked rotor Current – Ia (A) : 1284

Ia / In : 8.5

Speed (rpm) : 2980

Locked rotor Torque – Ma (Nm) : 778

Ma / Mn : 2.7

Rated current (A) : 151

Y / Δ Starting

Torque – Mn (Nm) : 288

Locked rotor Current – Ia (A) : 408

Ia / In : 2.7

Cos φ : 0.91

Locked rotor Torque – Ma (Nm) : 259

	4/4	3/4	1/2
Efficiency %	94.2	94.2	92.7

Ma / Mn : 0.9

Moment of inertia J (kgm)² : 0.62

Breakdown Torque – Mk (Nm) : 864

Mk / Mn : 3.0

MECHANICAL DESIGN

Frame : Cast Iron

End shields : Cast Iron

Cooling fan : Plastic

Terminal box : Aluminium

Cable gland : Pg 42

No of cable glands : 2

Bearing Arrangement

Standard design

Drive End

6315 ZZ C3

Non Drive End

6315 ZZ C3

Reinforced design

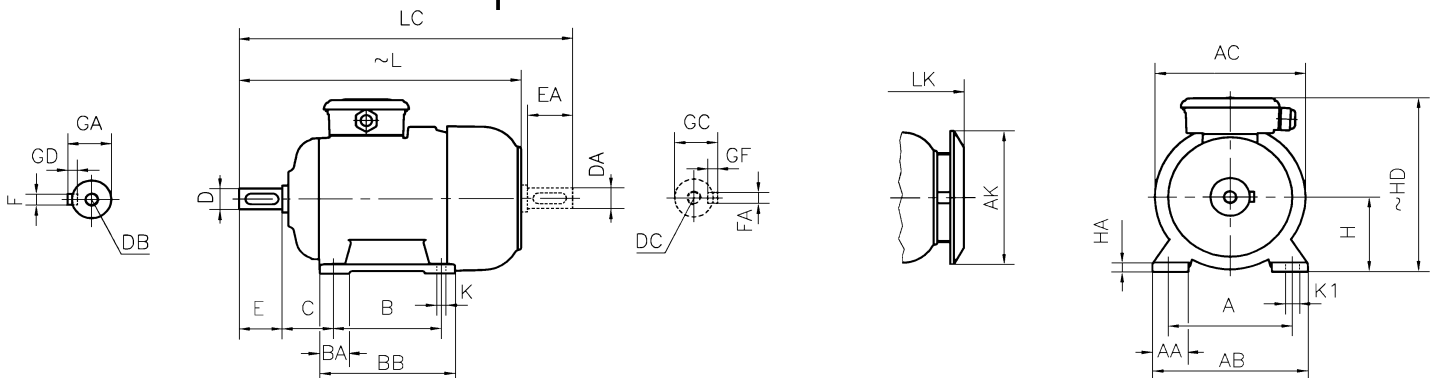
NU 315 E

6315 C3

Noise Level (dB-A) : 76

Paint : RAL 7031- Grey

Approximate weight (kg) : 585



DIMENSIONS

Dimensions of foot mounted motors for mounting arrangement : B3, B6, B7, B8, B15, V5, V6																							
H	HD	HA	A	AA	AB	ØAC	ØAK	K	K1	B	B'	BA	BA'	BB	L	LC	LK	C	E	DB	ØD	GA	FxGD
~	~	~	~	~	~	~	~	~	~	~	~	~	~	~	~	~	~	EA	DC	ØDA	GC	FAXGF	
280	630	40	457	120	550	544	440	24	-	-	419	85	128	474	958	1104	1014	190	140	M20	65	69	18X11

* Efficiencies are calculated according to indirect method where the additional load losses are determined from exact measurements at different load points.