

# GM2E 160 M 2b

# IE2

# GAMAK

3-Phase 400 V (Δ) 50 Hz

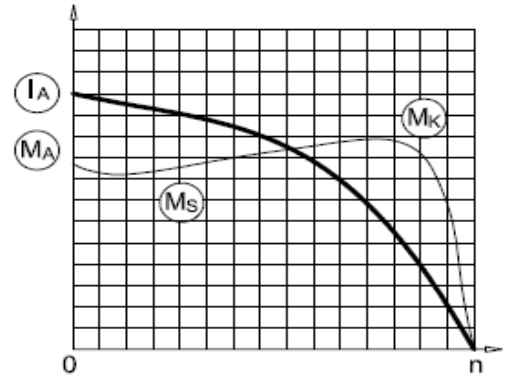
Duty Type : S1

Degree of protection : IP 55 ( TEFC )

Insulation class : F ( 155 °C )

Temp rise : Class B ( 80K )

Mounting Design : B3



## ELECTRICAL DESIGN

## Direct On Line

Rated output (kW) : 15

Locked rotor Current – Ia (A) : 214

Ia / In : 7.5

Speed (rpm) : 2945

Locked rotor Torque – Ma (Nm) : 146

Ma / Mn : 3.0

Rated current (A) : 28.5

## Y / Δ Starting

Torque – Mn (Nm) : 48.6

Locked rotor Current – Ia (A) : 68

Ia / In : 2.4

Cos φ : 0.85

Locked rotor Torque – Ma (Nm) : 49

Ma / Mn : 1.0

	4/4	3/4	1/2
Efficiency %	90.4	90.4	89.7

Moment of inertia J (kgm)<sup>2</sup> : 0.041

Breakdown Torque – Mk (Nm) : 170

Mk / Mn : 3.5

## MECHANICAL DESIGN

Frame : Cast Iron

End shields : Cast Iron

Cooling fan : Plastic

Terminal box : Plastic

Cable gland : Pg 29

No of cable glands : 2

## Bearing Arrangement

Standard design

Drive End

6309 ZZ C3

Non Drive End

6209 ZZ C3

Reinforced design

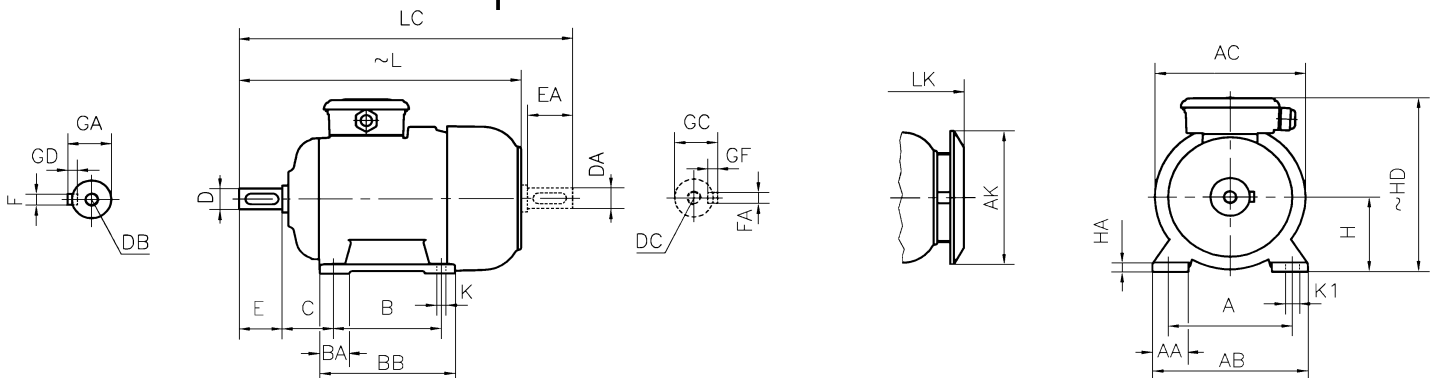
NU 309 E

6309 C3

Noise Level (dB-A) : 70

Paint : RAL 7031- Grey

Approximate weight (kg) : 113



## DIMENSIONS

### Dimensions of foot mounted motors for mounting arrangement : B3, B6, B7, B8, B15, V5, V6

H	HD	HA	A	AA	AB	ØAC	ØAK	K	K1	B	B'	BA	BA'	BB	L	LC	LK	C	E	DB	ØD	GA	FxGD
~	~													~		~		EA	DC	ØDA	GC	FAXGF	
160	380	22	254	60	312	310	303	15	-	210	-	62	-	260	600	716	657	108	110	M16	42	45	12X8

\* Efficiencies are calculated according to indirect method where the additional load losses are determined from exact measurements at different load points.