

GM2E 160 L 2

IE2

GAMAK

3-Phase 400 V (Δ) 50 Hz

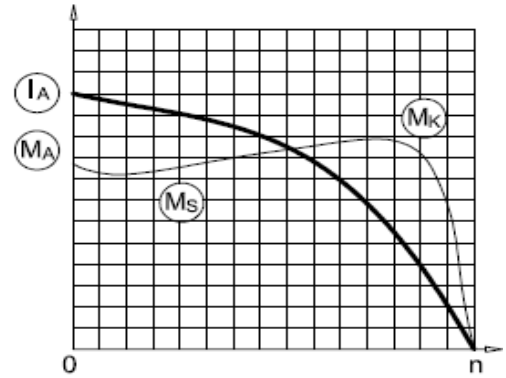
Duty Type : S1

Degree of protection : IP 55 (TEFC)

Insulation class : F (155 °C)

Temp rise : Class B (80K)

Mounting Design : B3



ELECTRICAL DESIGN

Direct On Line

Rated output (kW) : 18.5

Locked rotor Current – Ia (A) : 249

Ia / In : 7.7

Speed (rpm) : 2950

Locked rotor Torque – Ma (Nm) : 150

Ma / Mn : 2.5

Rated current (A) : 32.3

Y / Δ Starting

Torque – Mn (Nm) : 59.9

Locked rotor Current – Ia (A) : 84

Cos φ : 0.91

Ia / In : 2.6

Locked rotor Torque – Ma (Nm) : 48

Efficiency %	4/4	3/4	1/2
	90.9	90.8	90.1

Ma / Mn : 0.8

Moment of inertia J (kgm)² : 0.048

Breakdown Torque – Mk (Nm) : 180

Mk / Mn : 3.0

MECHANICAL DESIGN

Frame : Cast Iron

End shields : Cast Iron

Cooling fan : Plastic

Terminal box : Plastic

Cable gland : Pg 29

No of cable glands : 2

Bearing Arrangement

Standard design

Drive End

6309 ZZ C3

Non Drive End

6209 ZZ C3

Reinforced design

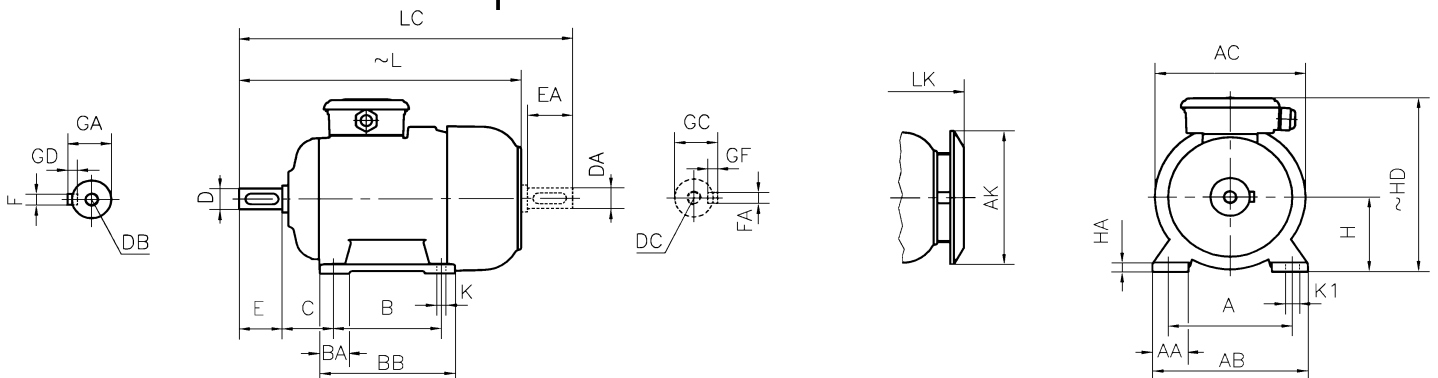
NU 309 E

6309 C3

Noise Level (dB-A) : 70

Paint : RAL 7031- Grey

Approximate weight (kg) : 135



DIMENSIONS

Dimensions of foot mounted motors for mounting arrangement : B3, B6, B7, B8, B15, V5, V6

H	HD ~	HA	A	AA	AB	ØAC	ØAK	K	K1	B	B'	BA	BA'	BB	L ~	LC	LK ~	C	E EA	DB DC	ØD ØDA	GA GC	FxGD FAXGF
160	380	22	254	60	312	310	303	15	-	254	-	62	-	304	644	760	701	108	110	M16	42	45	12X8

* Efficiencies are calculated according to indirect method where the additional load losses are determined from exact measurements at different load points.