

AGM2E 200 L 6b

IE2

GAMAK

3-Phase 400 V (Δ) 50 Hz

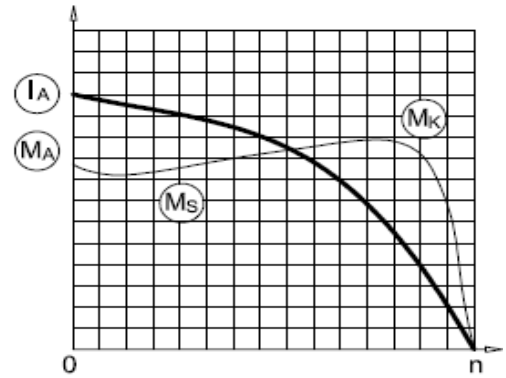
Duty Type : S1

Degree of protection : IP 55 (TEFC)

Insulation class : F (155 °C)

Temp rise : Class B (80K)

Mounting Design : B3



ELECTRICAL DESIGN

Direct On Line

Rated output (kW) : 22

Locked rotor Current – I_a (A) : 301

I_a / I_n : 7.0

Speed (rpm) : 970

Locked rotor Torque – M_a (Nm) : 541

M_a / M_n : 2.5

Rated current (A) : 43

Y / Δ Starting

Torque – M_n (Nm) : 216.5

Locked rotor Current – I_a (A) : 99

I_a / I_n : 2.3

Cos φ : 0.81

Locked rotor Torque – M_a (Nm) : 173

	4/4	3/4	1/2
Efficiency %	91.1	91.1	88.4

M_a / M_n : 0.8

Moment of inertia J (kgm)² : 0.26

Breakdown Torque – M_k (Nm) : 650

M_k / M_n : 3.0

MECHANICAL DESIGN

Frame : Aluminium

End shields : Cast Iron

Cooling fan : Plastic

Terminal box : Aluminium

Cable gland : Pg 36

No of cable glands : 2

Bearing Arrangement

Standard design

Drive End

6312 ZZ C3

Non Drive End

6212 ZZ C3

Reinforced design

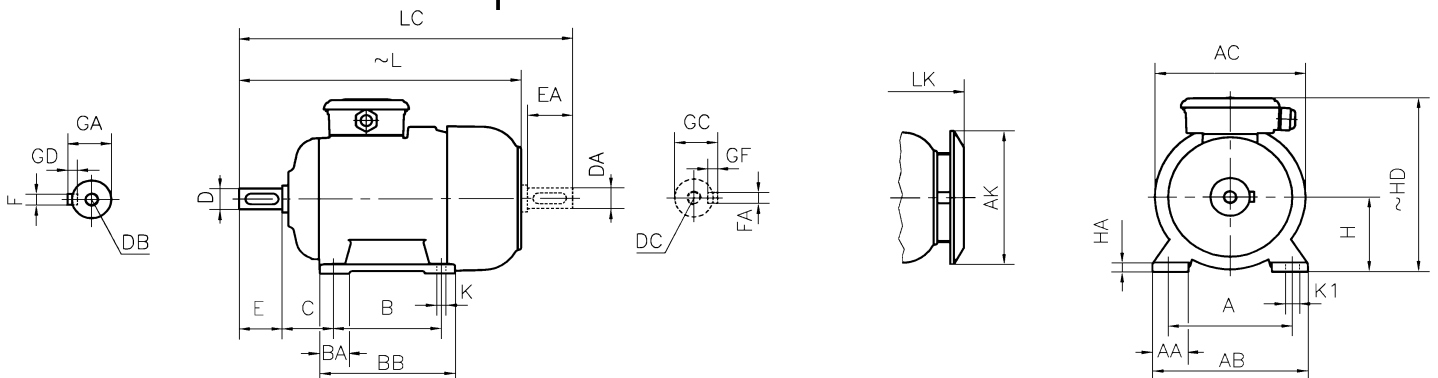
NU 312 E

6312 C3

Noise Level (dB-A) : 61

Paint : RAL 7031- Grey

Approximate weight (kg) : 185



DIMENSIONS

Dimensions of foot mounted motors for mounting arrangement : B3, B6, B7, B8, B15, V5, V6

H	HD ~	HA	A	AA	AB	ØAC	ØAK	K	K1	B	B'	BA	BA'	BB	L ~	LC	LK ~	C	E EA	DB DC	ØD ØDA	GA GC	FxGD FAXGF
200	477	26	318	80	398	390	370	19	24	305	-	68	-	355	747	865	803	133	110	M20	55	59	16X10

* Efficiencies are calculated according to indirect method where the additional load losses are determined from exact measurements at different load points.