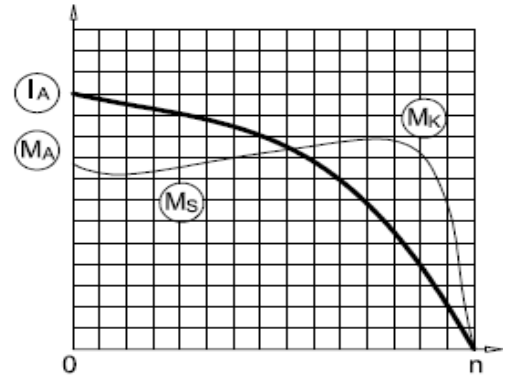


## AGM 56 4a

3-Phase 230/400 V 50 Hz

Duty Type : S1  
 Degree of protection : IP 55 ( TEFC )  
 Insulation class : F ( 155 °C )  
 Temp rise : Class B ( 80K )  
 Mounting Design : B3



### ELECTRICAL DESIGN

### Direct On Line

Rated output (kW) : 0.06  
 Speed (rpm) : 1370  
 Rated current (A) : 0.25  
 Torque – Mn (Nm) : 0.42  
 Cos φ : 0.61  
 Efficiency % : 

4/4	3/4	1/2
56.9	56.8	52.2

  
 Moment of inertia J (kgm)<sup>2</sup> : 0.00011

Locked rotor Current – Ia (A) : 1  
 Ia / In : 3.0  
 Locked rotor Torque – Ma (Nm) : 1  
 Ma / Mn : 2.4

### Y / Δ Starting

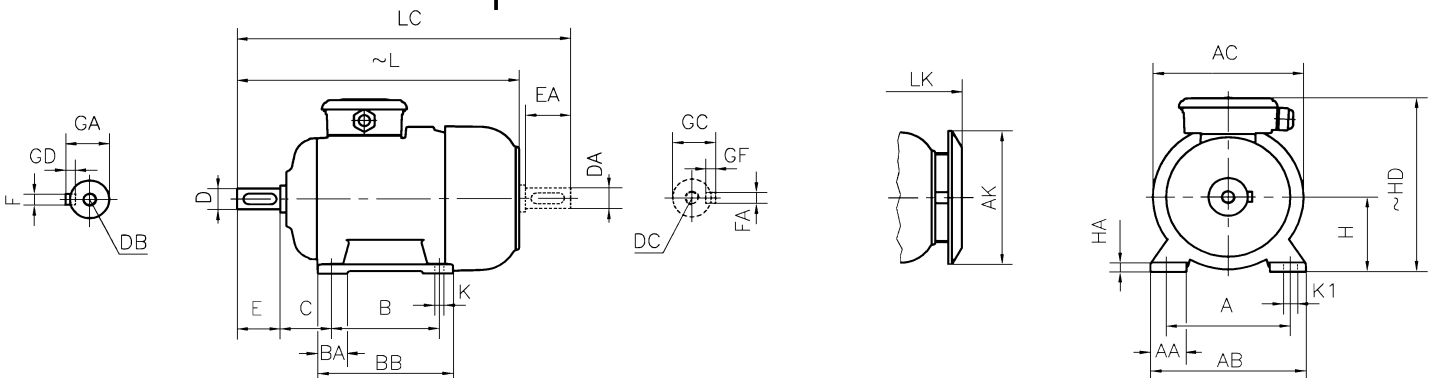
Locked rotor Current – Ia (A) : -  
 Ia / In : -  
 Locked rotor Torque – Ma (Nm) : -  
 Ma / Mn : -  
 Breakdown Torque – Mk (Nm) : 1  
 Mk / Mn : 2.6

### MECHANICAL DESIGN

Frame : Aluminium  
 End shields : Aluminium  
 Cooling fan : Plastic  
 Terminal box : Plastic  
 Cable gland : Pg 11  
 No of cable glands : 1

### Bearing Arrangement

	Drive End	Non Drive End
Standard design	6200 ZZ	6200 ZZ
Reinforced design	-	-
Noise Level (dB-A)	: 42	
Paint	: RAL 7031- Grey	
Approximate weight (kg)	: 2.6	



### DIMENSIONS

Dimensions of foot mounted motors for mounting arrangement : B3, B6, B7, B8, B15, V5, V6																							
H	HD ~	HA	A	AA	AB	ØAC	ØAK	K	K1	B	B'	BA	BA'	BB	L ~	LC	LK ~	C	E EA	DB DC	ØD ØDA	GA GC	FxGD FAXGF
56	152	9	90	28	112	105	-	5.8	9	71	-	24	-	87	161	185	-	36	20	M4	9	10.2	3X3

\* Efficiencies are calculated according to indirect method where the additional load losses are determined from exact measurements at different load points.